

# Development

With increasing production and the need to produce premium wines consistently year after year, a number of trial projects were installed to control the temperature on fermentation tanks using available off the shelf field hardware stations and software. The system proved to be a resounding success beyond expectations, and gave wine makers a reliable centralized monitoring system of all their fermentation tanks. From the PC, all vessel temperatures can be viewed and the control set points entered, plus vessels in an alarm condition alert the wine maker. Other benefits include tracking of sugar levels, expanding the monitoring into the refrigeration plant to mention a few.

With the trial projects completed and the wine makers recommendations taken on board, the software and field stations were further developed into a specialist monitoring and control system for the wine maker, and packaged into two systems, 'VinWizard' (pre-built) and 'VinWizard Integrator' (kit set systems for the integrator). The comprehensive software now includes all the features sort by the winemaker. The '2100 series' field stations now encompass the latest technology and will even control with the PC on or off, plus provide as an option, indication on each Fermentation vessel of temperature and control setpoint.

The distributed nature of the 'A4e' field stations keep installation costs down, as they are mounted close to the vessels being controlled, with one low cost data cable connecting them all together and back to the PC. This very modern and advance installation method is easy and user friendly, and provides more benefits and advantages for every dollar spent.

The fermentation temperature control package comprises of a PC and software communicating via a data highway with input and output modules to monitor and control temperature.

The Graphics User Interface provides an easy to use, informative and adaptable tool for an operator to monitor and control field equipment.

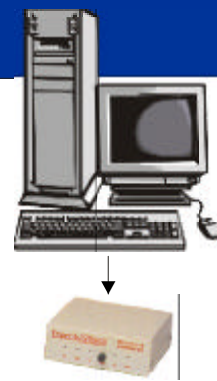
Early warning systems provide maintenance staff with accurate information and indicators to enable potential problems to be remedied before product quality is compromised.

The system is adaptable and expandable to allow future growth and additional equipment to be monitored, as need dictates.

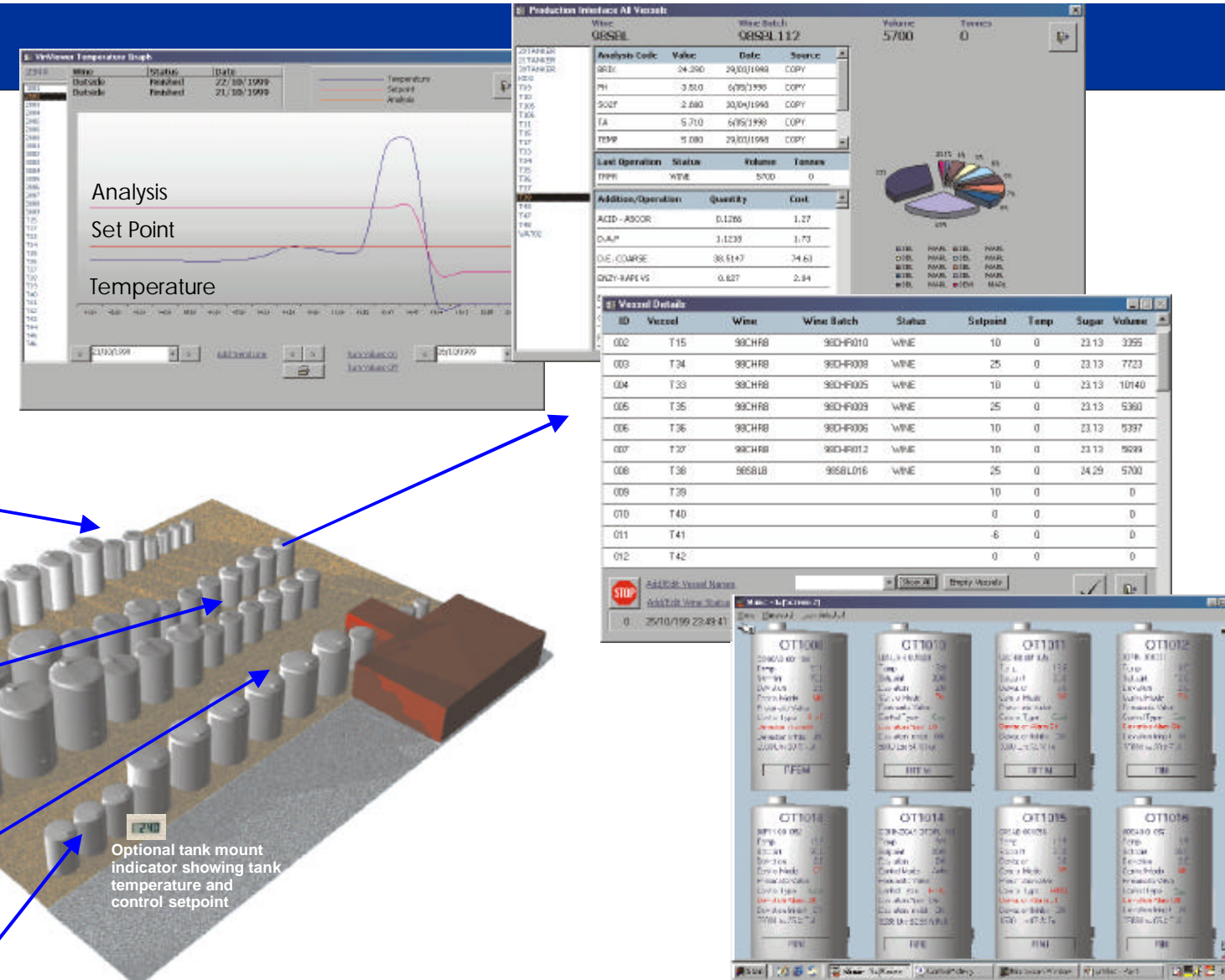
The Software runs in a Windows environment and is fully compatible with all of the Windows features we have become accustomed with.

With the fermentation temperature control package, you will wonder how you got on without it.

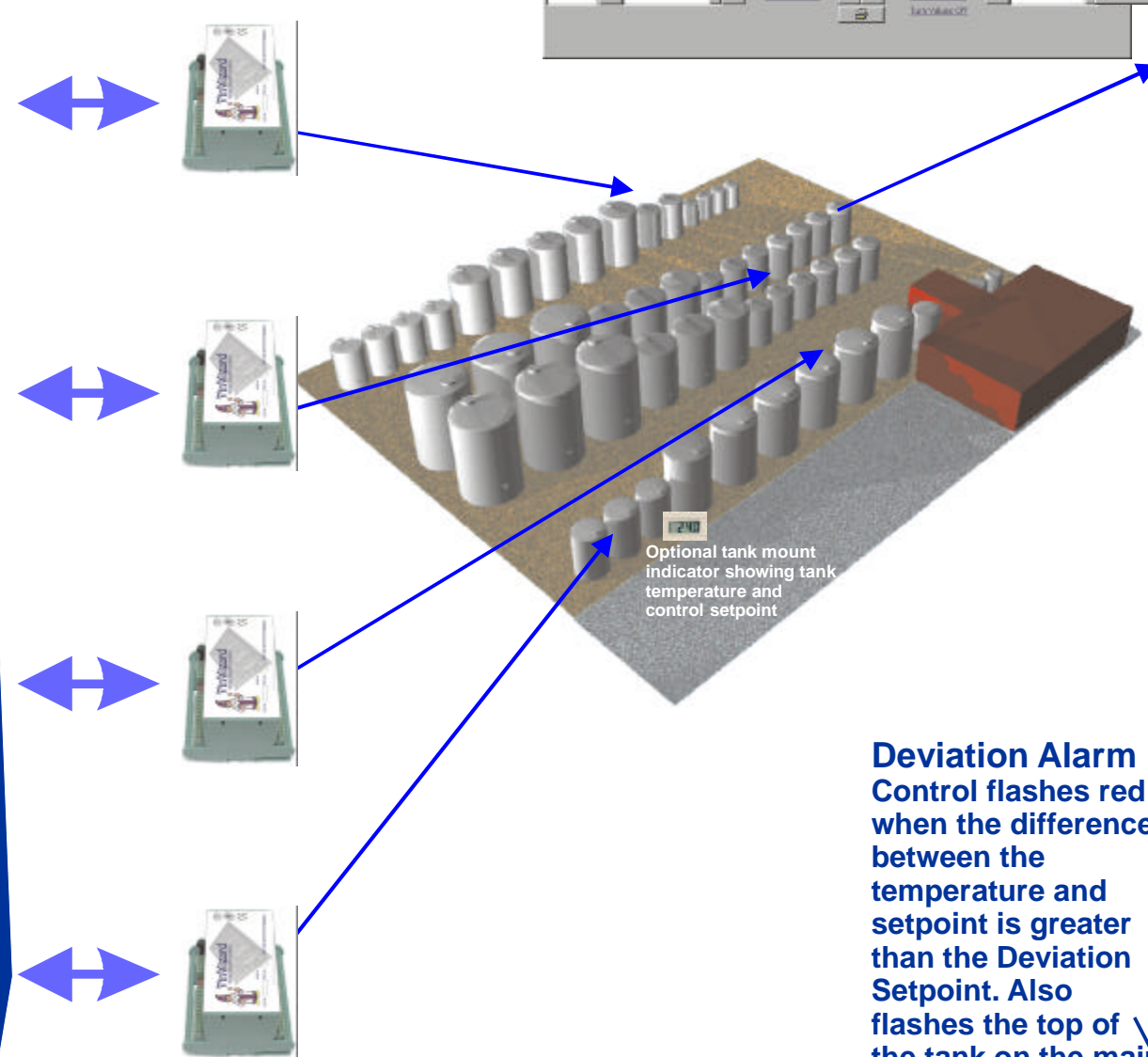
# Working System



De-centralize your system by locating and sizing panels in The winery as required.



VinWizard



Optional tank mount indicator showing tank temperature and control setpoint

Simply daisy-chain as many panels as required. Makes expansion a breeze.

- Barrel Halls
- Refrigeration Systems
- Pump Status
- PLC Interface
- Co2 Measurement
- Humidity
- Ambient

Add components As required

Deviation Alarm Control flashes red when the difference between the temperature and setpoint is greater than the Deviation Setpoint. Also flashes the top of the tank on the main screen.

Inhibits the Deviation Alarm for 4 hours or until the difference between the temperature and setpoint is less than the Deviation Setpoint

Turns the deviation alarm on or off.

Deviation Alarm

2004

00CHR002

00SAB00127

Finished 15500 Litres

Temperature 18.4 0.0

Setpoint 16.0

Cool Diff 0.0

Heat Diff 0.0

Deadband 1.0

Control Mode H/C

Deviation Setpoint 1.0

Deviation Inhibit On

Deviation Alarm Set

Computer Control On

Vessel name set from the setup Wizard. Can be changed at anytime.

Vessel ID

Double click the vessel name to change the vessel contents, volume and status. Can also set the temperature.

Click to set the vessel control settings.

Set the control mode from cooling, heating or both

Shows that the computer has control or not.

# Some of our Existing Sites

# VinWizard

## Winery Automation Systems

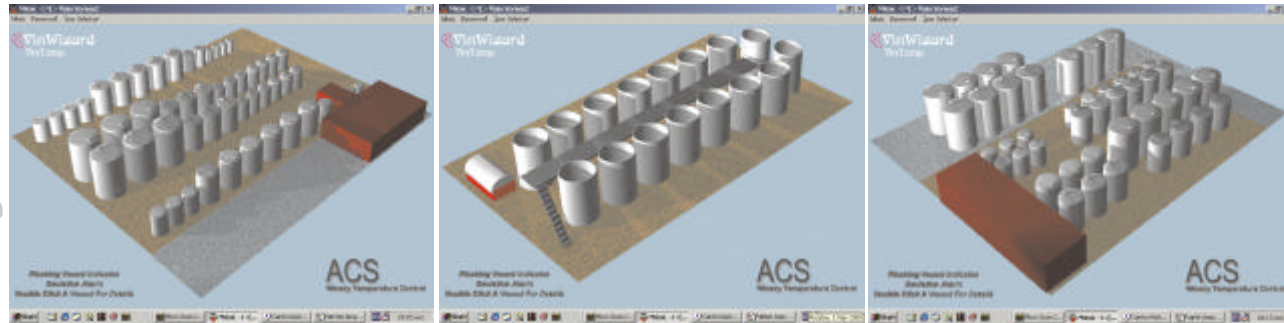
For the Wine Maker

Take Control of your Ferments

For the Analyst

For the Owner

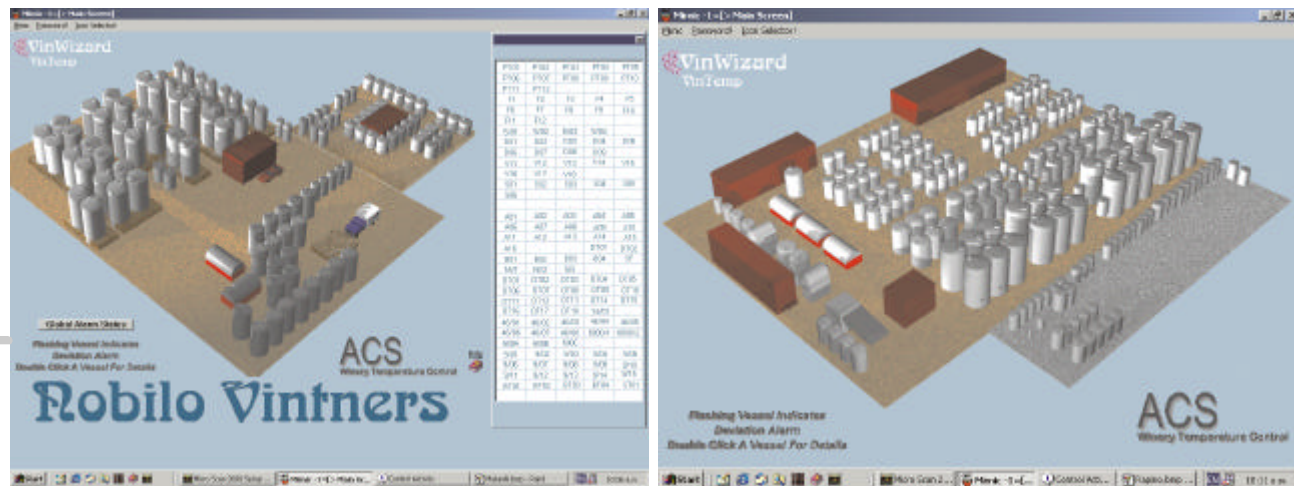
Automated Winery Temperature Control System



Matariki Wines

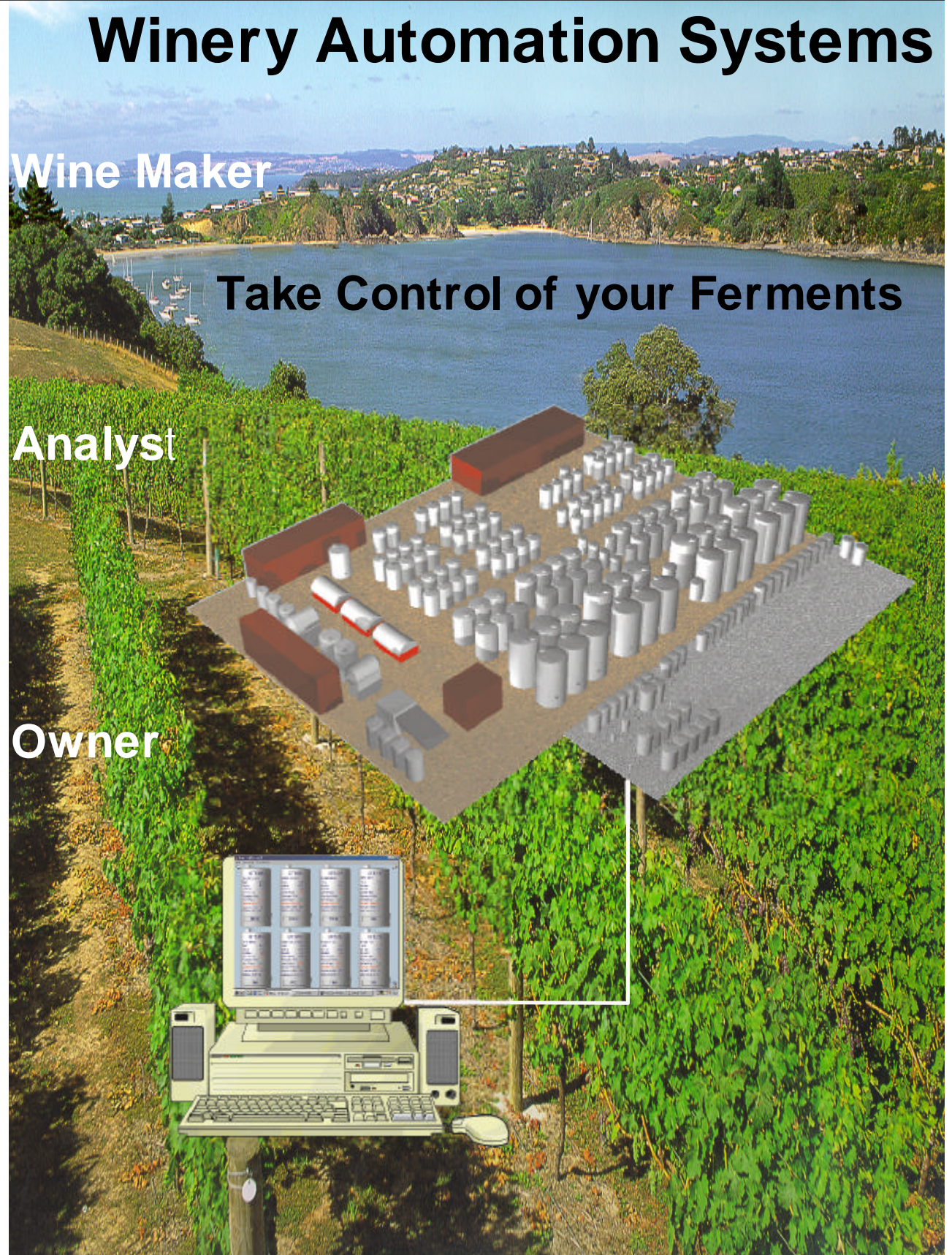
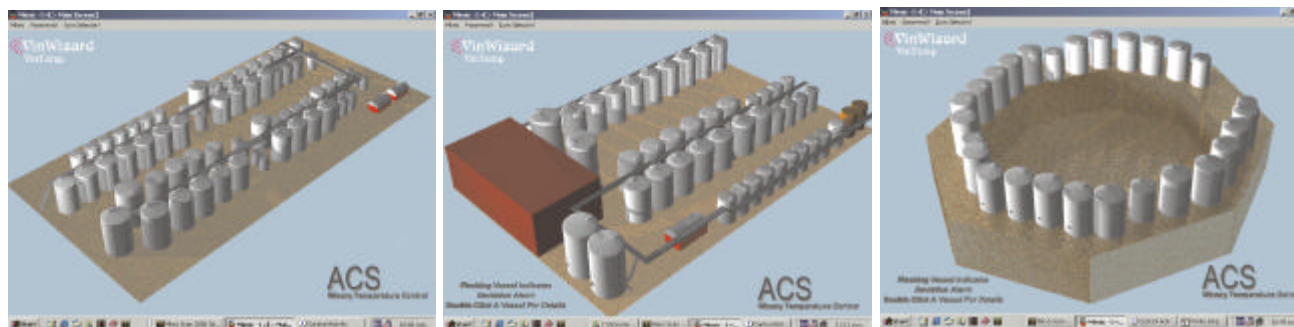
Nautilus Wines

Vavasour Wines



House of Nobilo

Rapaura Vintners



Your Local Agent



Assist Computer Solutions: [www.vinwizard.com](http://www.vinwizard.com)  
 Intech Instruments Ltd: [www.intechinstruments.com](http://www.intechinstruments.com)

Precision Temperature Control  
 Heating & Cooling Control  
 Monitoring & Recording  
 All from one location  
 Optional Temperature Display on Vessels

VinWizard